

NexLog EXP Express Recording Solutions SERIES



The NexLog EXP recorder is the ideal solution for capturing and storing telephone, radio or intercom audio and available metadata for organizations that need 8 or fewer audio inputs recorded. The recorder is ideally suited for local Police, Fire, Education, Hospitals and Manufacturing facilities with critical recording requirements.

Recording System Compatibility

The NexLog EXP recorder is designed to record analog, digital, and/or VoIP audio inputs from Telephone Systems. NexLog EXP recorder also supports Radio Consoles, IP based DMR and NXDN Radio Systems and SIP-based Intercom systems.

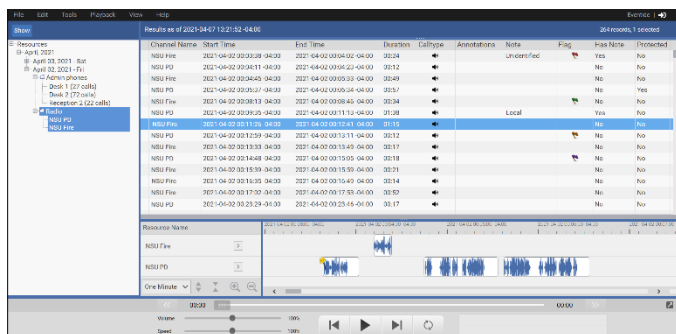
Security and Reliability

The NexLog EXP recorder comes with role-based security and the Linux reliability for which Eventide is well known, assuring that recordings are available when needed.

Management and Monitoring

The NexLog EXP recorder includes a standard web-based Interface for configuration, administration, and monitoring.

Simple Browser Based User Access



The NexLog EXP recorder supports HTML5 user access from any browser with network connectivity to the recorder's IP address or URL. The NexLog EXP recorder includes Eventide's MediaWorks EXP software for intuitive Browsing, Replay and Export of recordings.

Available Enhanced Set of Replay Tools

Upgrade to the optional MediaWorks Enhanced version and gain a full suite of replay tools, including Text/Voice Annotation, Audio Redaction, Incident Management, seven ways of sharing recordings, Metadata search and more. Add the optional MediaWorks Mobile software option for smartphone access to recordings.

Hardware/Software Profile

Self-contained Linux-based 1U rack-mountable appliances with Dual SSD's (RAID1 mirroring) for storage integrity. Based on the highly reliable enterprise recording software for which Eventide is well known.

Software Update Subscription (EXPSUS)

The first 12-month period of EXPSUS coverage is included with purchase of a NexLog EXP recorder. Purchase additional 2-month periods of DXSUS coverage for ongoing assured security, reliability, and supportability.

Automatic Archiving

Each NexLog EXP recorder includes an Archiving license to continuously transfer recordings to one external USB Hard Drive or USB Thumb Drive, or to one Network Attached Storage (NAS) device.

VoIP, IP Dispatch and IP Radio Support

The NexLog EXP recorder supports recording via the following VoIP methods: Passive SPAN of SIP, H.323 or Cisco SCCP, and termination of SIP end point, Cisco BiB or Mitel SRC. The NexLog EXP recorder can optionally record MOTOTRBO Controllerless systems via NAI-V, Tait DMR Tier 2 and Tier 3, Kenwood NexEdge trunked, SmartPTT consoles and RadioPRO consoles.

Configuration Information

- EXP Base unit with 1 card slot **Part No. NexLogEXP**
- Channel Licenses (Max. 8 Channels per system)
- 1 VoIP channel license **Part No. EXP801V**
- 1 Analog channel license **Part No. EXP801A**
- 1 Digital PBX channel license **Part No. EXP801D**
- Recording Interface PCIe Cards (Max. 1 card per system)
- 8 Channel Analog card **Part No. EXPANA8**
- 8 Channel Digital PBX card **Part No. EXPPBX8**
- MediaWorks Enhanced option **Part No. EXPUI8**
- Decoder (TRBO, DMR, NXDN) **Part No. 324720**
- Rack Mounting Rails **Part No. 324957**
- Quick Connect Kit (for card) **Part No. 109003-003**

Specification Summary

- 1U, short depth, rack or shelf mountable
- Dimensions: 14.5" (D) x 19" (W) x 1.7" (H)
- One PCIe slot for analog or digital PBX recording card
- Intel 4-core CPU
- Dual Solid-State Drives (RAID-1 mirrored)
- Over 80,000 hours of voice recording storage
- Dual 10/100/1000 Ethernet LAN ports
- Power Supply: 100/240VAC, 50/60Hz, 3/1.5A Max.

Contact Eventide Sales for Pricing

email: loggers@eventide.com
Telephone: +1-201-641-1200

NexLog EXP Express Recording Solutions SERIES

EXP-M RECORDER MOBILE – RUGGED – TACTICAL



The NexLog **EXP-M** recorder is the ideal solution for capturing and storing critical voice communications that occur in tactical situations and/or harsh environments, including:

- Mobile Incident Command Vehicles
- Portable Incident Management Centers
- Fireground Command
- Police and Fire Vehicles
- Trains and Railway Networks
- Cargo Ships
- Remote Shelters
- Portable Carrying Cases

Quick Specs:

- Rugged Vehicular/Portable Device
- 1 to 8 Audio Inputs
- 100% DC Powered
- Reliable Fan-less Design
- Extreme Environmental Tolerances
- EN50155 Vibration and Impact Compliant

Audio Recording Capabilities

The NexLog EXP-M recorder is designed to record from 2-wire analog sources, 4-wire analog sources, or VoIP audio sources.

Security and Reliability

The NexLog EXP recorder comes with role-based security and the Linux reliability for which Eventide is well known, assuring that recordings are available when needed.

Simple Local (or Browser Based) User Access

The NexLog EXP-M recorder includes easy to use interfaces for audio replay, audio export and system configuration.

Simple Export to USB Storage Devices

Recordings can easily be exported to an external USB Flash drive, USB Hard Disk Drive (HDD) or USB Solid-State Drive (SSD).

Automatic Archiving

Each NexLog EXP-M recorder includes a license to archive recordings to one external device, such as a USB Hard Drive, USB Flash Drive, NAS, or a NexLog DX-Series recorder at HQ.

Hardware/Software Profile

Self-contained Linux-based mobile recorder with dual SSDs (RAID1 mirroring) for storage integrity. The internal SSDs are removable for security when powered down. The EXP-M recorder is based on Eventide's highly reliable NexLog DX-Series enterprise recording software.

Software Update Subscription (EXPSUS)

The first 12-month period of EXPSUS coverage is included with the purchase of a NexLog EXP-M recorder. Purchase additional 12-month periods of DXSUS coverage for ongoing assured security, reliability, and supportability.

Remote Startup and Orderly Shutdowns

Configurable ignition power control for vehicular use, with power-off delay of up to 24 hours.

Technical Specifications

- 2U, short depth; Rack, Shelf or VESA mountable
- Dimensions: 3.11" (H) x 10.24" (W) x 8.46" (D)
- One PCIe slot for analog recording card
- Dual Solid-State Drives (RAID-1 mirrored)
- Over 80,000 hours of voice recording storage
- Dual 10/100/1000 Ethernet LAN ports
- Operating Temperature: -40°F to 167°F (-40°C to 75°C)
- EN50155 Compliant: Temp., Humidity, Vibration, Impact
- Power Input: +6 to +36 Volts DC (+14 VDC Typical)
- Surge Protected DC Input (+80V clamp)



EVENTIDE INC.

email: loggers@eventide.com

Telephone: +1-201-641-1200

eventidecommunications.com